

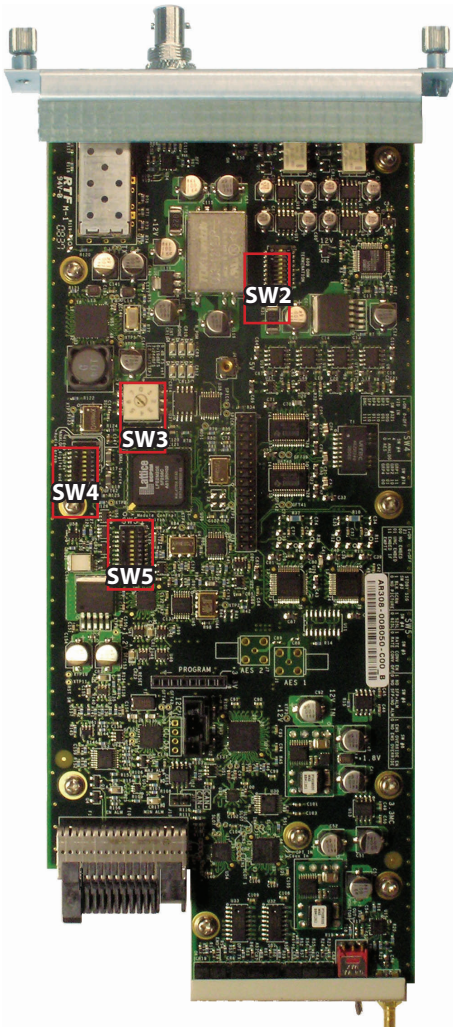


DigiLink DLC150E - SDI/SDTI 4-Channel Analog/Digital AES Audio Embed and Optical Transmitter

Artel ships the DLC150E configured as follows:

- Analog audio mode set to 24 bits
- Analog audio source with 600 ohm termination
- +20 dB peak audio level without clipping
- Asynchronous audio embed into destination group #1
- Digital video enabled through the BNC connector
- SDI grey field enabled if no video is present at the NTSC rate
- Alarm enabled if no SFP is present
- EMS override enabled (DigiLink Manager can change the DLC150E configuration)

DIP SWITCH CONFIGURATIONS



Configuration Switch Functions

- SW2** Controls the termination of the analog audio inputs
- SW3** Controls the peak analog audio level that can be handled without clipping
- (Rotary Switch)**
- SW4** Controls the signal source selection for the digital video, type of audio, and destination group for the embedding
- SW5** Controls multiple module operating states including: conditional embedding, non-video keep-alive signal, line rate for the standby video pattern, digital audio rate converter operation, optional alarm suppression for an uninstalled SFP, and EMS control mode

SW2 Configuration Analog Audio Termination			
	Function	Off	On
S1	Audio Ch D	High Z	600 ohm
S2	Reserved	-	Must be On
S3	Audio Ch C	High Z	600 ohm
S4	Reserved	-	Must be On
S5	Audio Ch B	High Z	600 ohm
S6	Reserved	-	Must be On
S7	Audio Ch A	High Z	600 ohm
S8	Reserved	-	Must be On

Factory Default: All On

SW3 Configuration Peak Audio Level	
SW	Function
0	+10 dBm
1	+12 dBm
2	+14 dBm
3	+16 dBm
4	+18 dBm
5	+20 dBm
6	+22 dBm
7	+24 dBm

Factory Default: +20 dBm

SW4 Configuration Signal Source			
S1	S2	S3	Video Source
On	On	On	SDI BNC In
Off	Off	Off	Backplane 1
On	Off	Off	Backplane 2
Off	On	Off	Backplane 3
On	On	Off	Backplane 4
Off	On	On	SFP Opt Receiver
Off	Off	On	Reserved
On	Off	Off	Reserved

Factory Default: All On

SW4 Configuration Signal Source			
	Function	Off	On
S4	Audio Source	AES Digital	Analog
S5	Analog Audio Mode	20 bits	24 bits

Factory Default: All On

S6	S7	Audio Destination
On	On	Group 1
Off	On	Group 2
On	Off	Group 3
Off	Off	Group 4

Factory Default: All On

	Function	Off	On
S8	Reserved	-	Must be On

Factory Default: On

SW5 Configuration Mode Control		
Audio Embed Mode	S1	S2
Group Embed (See SW4: S6, S7)	On	On
Always Embed	On	Off
No Embed	Off	Off
Reserved	Off	On

Factory Default: All On

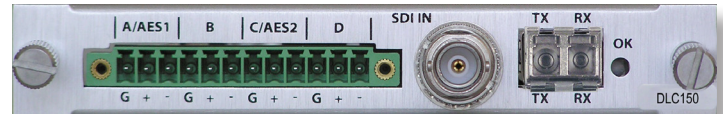
	Function	Off	On
S3	Standby Signal	Artel*	SDI Grey
S4	Standby Type	625 Line	525 Line
S5	Rate Converter	Sync	Async
S6	SFP Alarm	Disabled	Enabled
S7	Reserved	-	Must be On
S8	EMS Override	Local Control	Remote Control

*Non-video keep-alive signal.

Factory Default: All On



Install SFP



DLC150E FRONT PANEL LEDs

LED	Function	Color	Description
OK	DLC150 Module Status	OFF	If power is applied to the system, an internal fault with the DLC150E may exist
		● Green	Normal operation
		● Yellow	If no other status LEDs indicate a minor alarm, then a temperature alarm condition may exist
		● Red	TX may provide fault information or there may be an internal error
EMS	DigiLink Manager System Status	OFF	The DLC150E module is in local mode and its configuration is controlled by the onboard configuration switches
		● Green	The DLC150E module is in remote mode and the configuration has been set by DigiLink Manager. When in remote mode, the actual configuration of the module will likely not match the settings of the configuration switches and changing the configuration switches will have no effect on the module operation
TX	Transmitter Status	OFF	Transmitter is disabled. The DLC150E is using the backplane to provide a feed to another chassis module
		● Green	Normal operation (input signal present)
		● Yellow	No video input signal is detected. The DLC150E is transmitting the standby signal; either a grey screen or a non-video keep-alive signal as determined by SW5, S3
		● Red	SFP not installed or an SFP TX alarm exists. SW5, S6 must be ON to receive this alarm condition
ASI	DVB-ASI Signal Status	OFF	No DVB-ASI input signal detected
		● Green	DVB-ASI video input signal detected, embedding is disabled
		● Red	DVB-ASI video out-of-rate signal detected ($> \pm 100\text{ppm}$ from 270Mb/s)
SDI	SDI Signal Status	OFF	No SDI video input is detected
		● Green	SDI video input detected and embedding is enabled
		● Yellow	SDI input EDH errors detected
		● Yellow	SDI input EDA errors detected
		● Red	SDI video out-of-rate signal detected ($> \pm 100\text{ ppm}$ from 270 Mb/s)
ANA	Embedding Mode	OFF	AES-3 audio embedding selected
		● Green	Analog audio embedding selected
AES1/ AES2	AES3-formatted Audio	OFF	Embedding disabled (SW5, switches 1 and 2 are OFF)
		● Green	Normal operation. AES signal present (1 for channel A, 2 for channel C)
		● Yellow	No AES signal detected (1 for channel A, 2 for channel C)
		● Yellow	CRC error detected in the AES stream (1 for channel A, 2 for channel C)
		● Red	Audio group in use and embedding disabled (SW5, switches 1 and 2 are ON)
	Analog audio embedding selected (ANA is green)	OFF	Embedding disabled (SW5, switches 1 and 2 are OFF)
		● Green	Normal operation
		● Red	Analog audio overload (1 for channel A or B, 2 for channel C or D)
		● Red	Audio group in use and embedding disabled (SW5, switches 1 and 2 are ON)
		● Red	Audio group in use and embedding disabled (SW5, switches 1 and 2 are ON)

● Yellow | ● Flashing Red

Sales



T: 978-263-5775
www.artel.com
sales@artel.com
customer@artel.com